

Sauder Education®

# Quarters 3

**MOMENTUM**  
T E X T I L E S



Canter Safari



Sand



Saddle



Alfalfa



Ancho



Mica



Bordeaux



Ink



Night



Willow



Iron



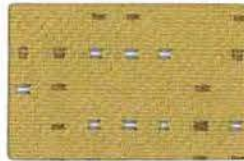
Sable



Onyx



Via Khaki



Cornsilk



Cayenne



Slate



Feldspar



Pristine



Galaxy



Free Cocoa



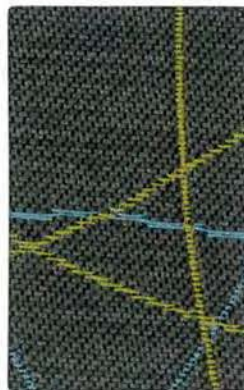
Pearl



Platinum



Oasis



Evening



Graphite



Orbit



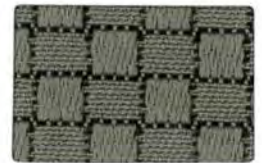
Impact Indigo



Putty



Sprout



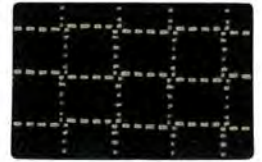
Relic



Crimson



Chocolate



Stark



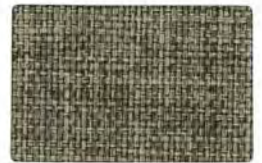
Cover Cloth Electric



Oat



Cyan



Taupe



Sorrel



Flame



Graphite



Amuse Admiral



Poppy



Mocha



Alloy



Hue Chipotle



Dandelion



Fern



Sky



Seaport



Currant



Char



Latte



Night



Aspen



Cocoa



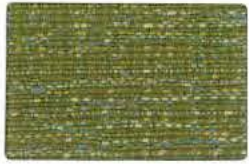
Grape



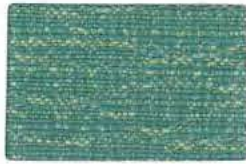
Black



Scribe Chianti



Juniper



Pool



Atlantis



Nutmeg



Flicker



Alloy



Clang Claret



Malt



Cress



Amber



Clove



Flint



Raven

# Quarters 3

Width- Pattern	Fiber Content & Backing	Finish	Abrasion (D.R.)	Light-fastness	Approx. Repeats	Cleaning Code
60" AMUSE ☛ ☎ ☛ ☛ ☛ *	61% Post Consumer Recycled Polyester, 39% Polyester Acrylic Backing	Soil & Stain Resistant	50,000	(Cl. 4) 40 Hrs.	6 1/8" L, 7 1/2" W	WS
54" CENTER ☛ ☎ ☛ ☛ *	100% Polyurethane / PVC Free Polyester Backing	Anti-microbial, Anti-bacterial	240,000	(Cl. 4.5) 40 Hrs.		W
56" CLANG ☛ ☎ ☛ ☛ *	73% Post Consumer Recycled Polyester, 27% Polyester Acrylic Backing	Soil & Stain Resistant	100,000	(Cl. 4) 40 Hrs.	16 3/4" L, 7 1/4" W Shown Railroaded	WS
59" COVER CLOTH ☛ ☎ ☛ ☛ *	100% Polyester	Crypton®	200,000	(Cl. 4) 40 Hrs.		W
61" FREE ☛ ☎ ☛ ☛ *	100% Post Consumer Recycled Polyester Acrylic Backing	Soil & Stain Resistant	100,000	(Cl. 4) 40 Hrs.	5 3/8" L, 5" W	WS
54" HUE ☛ ☎ ☛ ☛ *	100% Post Industrial Recycled Polyester Latex Backing	Teflon®	1,000,000	(Cl. 4.5) 60 Hrs.		WS
54" IMPACT ☛ ☎ ☛ ☛ *	80% Post Industrial Recycled Polyester, 20% Olefin Acrylic Backing	Teflon®	114,000	(Cl. 5) 60 Hrs.	1/2" L, 1/2" W	WS
56" SCRIBE ☛ ☎ ☛ ☛ *	65% Post Industrial Recycled Polyester, 35% Post Consumer Recycled Polyester	Crypton® Green	210,000	(Cl. 4) 40 Hrs.		W
56" VIA ☛ ☎ ☛ ☛ *	69% Post Consumer Recycled Polyester, 31% Polyester Acrylic Backing	Soil & Stain Resistant	80,000	(Cl. 4) 40 Hrs.	3 5/8" L, 3" W	WS

All Patterns meet CA Bulletin 117-2013.

Primary Application: Upholstery Seating.

\*ACT® Registered Certification Marks

## EXPLANATION OF ACT ICONS FOR UPHOLSTERY

### FIRE RETARDANCY

Flammability testing determined as fabric's resistance to burning.



#### PASSES

California 117-2013

### COLORFASTNESS TO WET & DRY CROCKING

Colorfastness to wet & dry crocking refers to the rubbing off of color from the fabric onto clothing, hands or other materials and can occur under wet or dry conditions.



#### PASSES

AATCC 8-1974 Dry Crocking, Class 4 minimum;  
Wet Crocking,  
Class 3 minimum

### COLORFASTNESS TO LIGHT

Colorfastness to light is the degree to which fabric will retain its color when exposed to light.



#### PASSES

AATCC 16A-1974 or AATCC 16E-1976; Class 4 minimum  
at 40 hours

NOTE: Class 4 minimum at 60 hours is recommended for direct sunlight exposure situations

### PHYSICAL PROPERTIES

3 physical property tests include: brush pill test to determine a fabric's pilling. Breaking/tensile strength is the ability of a fabric to withstand tension without breaking or tearing. Seam slippage is the pulling apart of fabrics at the seams.



#### PASSES

Brush Pill ASTM D3511, 3-4 minimum  
Breaking Strength ASTM D3597-D1682-64 (1975)  
50 lbs. minimum in warp & weft  
Seam Slippage ASTM D3597-D434-75 25 lbs. minimum in warp & weft

### ABRASION

Abrasion is the ability of a fabric to withstand damage from wear and rubbing. There is a general contract specification as well as a heavy duty specification.



#### General Contract

#### PASSES

ASTM 3597 modified (#10 cotton duck);  
15,000 double rubs Wyzenbeek Method



#### Heavy Duty

ASTM 3597 modified (#10 cotton duck);  
30,000 double rubs Wyzenbeek Method or  
ASTM D4966 (with 21 oz. weight);  
40,000 rubs Martindale Method

### CLEANING CODE DEFINITIONS

**WS:** Clean with water-based cleaning agents or foam. (Energine, Carbona, Renuzit or other similar products). Vacuuming or light brushing is recommended to prevent dust and soil buildup.

**W:** Water-based cleaning agents or foam.



GREENGUARD Children & Schools Indoor Air Quality Certified®. CA Section D1350 compliant. Eligible for CHPS Low-Emitting Material Credits. (Excludes pattern Canter)

SAUDER | Education

930 W. Barre Road  
Archbold, OH 43502

800.537.1530 ph  
419.446.4945 fax

[sales@saudereducation.com](mailto:sales@saudereducation.com)

[www.saudereducation.com](http://www.saudereducation.com)

Additional patterns and colors are available in Momentum Textiles Library Books or visit us at [memosamples.com](http://memosamples.com)

Memo samples are available on request: call, fax, or visit our Web site.

**MOMENTUM**  
TEXTILES

800-366-6839  
[memosamples.com](http://memosamples.com)

**5 CLICKS**  
In 5 simple clicks, you can find hundreds of pre-approved, In grade, and in stock fabrics.