

A & D Style

Fabric Collections From Absecon Mills & Douglass Industries

Sherpa & Shire

UPHOLSTERY FABRIC **LL***
100% Polyolefin

FEATURING...

WARP SPEED® » **IN STOCK**
for quick delivery!

Sherpa & Shire have been the hallmarks of durability and cleanability since their inception. These fabrics were cited by Interior Design magazine for their longevity as the best of the past 25 years. Nearly impervious to damage, Sherpa and Shire truly stand the test of time.

Sauder Education®

* Covered by a Limited Lifetime performance warranty.

Items on this side of the card are not in the Warp Speed program and are subject to standard delivery terms.



Sherpa Amber



Shire Grassland



Shire Pine



Shire Greystone



Sherpa Grey Mix



Shire Nectar



Shire Heath



Sherpa Jade



Shire Aqueduct



Sherpa Gargoyle



Shire Acorn



Shire Steel Blue



Sherpa Hunter



Sherpa Moss



Shire Koala



Shire Tigerlily



Sherpa Denim



Sherpa Ivy League



Shire Pesto



Shire Oxford



Sherpa Sparkler



Sherpa Hudson Bay



Shire Tuscan Blue



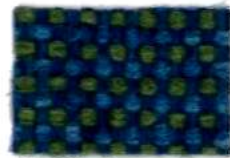
Shire Garden



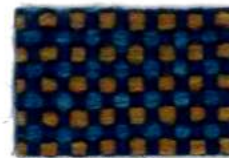
Shire Bison



Sherpa Mauve



Shire Mariner



Shire Cordon Bleu



Shire Aristocrat



Shire Sierra Blue



Shire Black Cherry



Shire Lobelia



Shire Midnight



Sherpa Rosewood



Shire Root Beer



Sherpa Garnet



Shire Grey Lilac



Sherpa Special Blue



Sherpa Newport



Sherpa Clove



Sherpa Cardinal



Sherpa Viola



Sherpa Purple Velvet



Sherpa Concord



Sherpa Mahogany

WARP SPEED' >>

IN STOCK
for quick delivery!

Sherpa & Shire

UPHOLSTERY FABRIC

100% Polyolefin

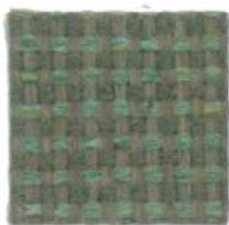
Covered by a Limited Lifetime Performance warranty.



SHIRE
SESAME



SHERPA
BROWN HAZE



SHIRE
PATINA



SHIRE
HOPSACK



SHERPA
GREY HEATHER



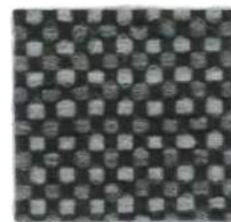
SHIRE
FOSSIL



SHIRE
MARIGOLD



SHIRE
ESPRESSO



SHIRE
BLACK MARBLE



SHIRE
TITAN BLUE



SHIRE
ASCOT



SHIRE
BRICKTOWN



SHIRE
INK



SHIRE
COMMODORE



SHERPA
ACADEMY



SHERPA
MAROON



SHERPA
AUTUMN



SHERPA
NAVY



SHERPA
ROYAL



SHERPA
INDIGO



SHIRE
COUNTRY



SHIRE
RED ROSE



SHERPA
BLACK



SHERPA
DARK BLUE



SHERPA
BILLIARD



SHERPA
GRAPE



SHERPA
SCARLET

Sherpa & Shire UPHOLSTERY FABRIC

LL* Pattern is covered by a limited lifetime performance warranty. Contact your sales representative for written warranty terms and conditions.

TECHNICAL INFORMATION

Fiber: 100% Polyolefin

Backing | Finish: Acrylic

A Abrasion Resistance: 250,000 double rubs (wire screen)

Weight: 16.0 ounces per linear yard (±1 oz.); 494 g/m

Width: 54" (137-140 cm)

Repeat: None (Pattern is woven up the roll and suitable for railroading)

*** Lightfastness:** 400 Hours, Class 5

• Colorfastness: Wet - Class 5 | Dry - Class 5

☆ Seam Slippage: Warp - 91 lbs | Fill - 95 lbs.

Cleaning Instructions: WS - For water-based stains, use mild detergent foam or upholstery shampoo. For oil based stains, spot clean fabric with a dry cleaning solvent, being sure to test area first. Cleaning by a professional service is recommended.

🔥 Flame Resistance: California Technical Bulletin 117, Section E; CS-191-53, Class 1; BIFMA X5.7-1991; UFAC, Class 1; B. S. 5852 Part 1: 1979 Ignition Source 0, smoldering cigarette.

Fabrics by Absecon Mills, Inc. Fabric performance symbols indicate that a fabric performs to commercial furniture manufacturing standards and passes all applicable testing as specified by the Association for Contract Textiles (ACT).

03/2010 | For additional cards or memo samples:

email samples@aanddstyle.com



WORSHIP



CORPORATE



HEALTHCARE



HOSPITALITY



ACADEMIC



THEATER



Absecon Mills is focused on being a responsible corporate entity and we are continually striving to find ways to help preserve our environment, increase energy efficiency and reduce waste. Our mode of manufacturing is specifically designed to prevent damage to the environment. Our products are woven using wind power and many are constructed with polypropylene (a by-product of gasoline manufacturing, utilizing post-industrial waste) and recycled polyester, which helps keep post-consumer waste in the material stream and out of landfills. Absecon offers finishes that use ten times less fluorocarbons than conventional finishes and are SCS Indoor Advantage Gold certified. We participate in a fabric recycling program and work hard to lessen our footprint on the environment. For more information on our green initiatives, please visit www.absecon.com.



WOVEN WITH WIND POWER



Sauder Education®

Sauder Manufacturing Company
930 West Barre Road
Archbold, OH 43502

Toll-free 800-537-1530
Fax: 419-446-3697
www.SauderEducation.com