

Performance Solutions VII

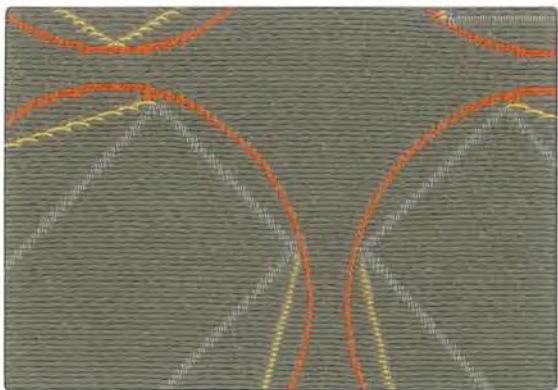
Acrobat
Posh
Swivel



Acrobat
63090 Salto



Acrobat
63092 Pivot



Swivel
63120 Granite



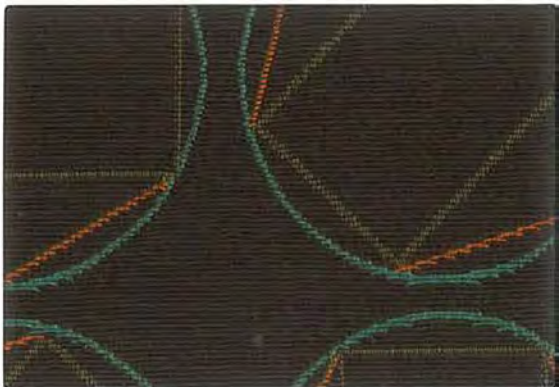
Swivel
63122 Red



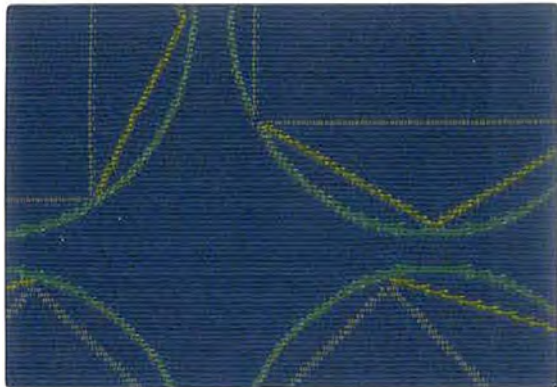
Acrobat
63093 Bend



Acrobat
63088 Spin



Swivel
63128 Clove



Swivel
63125 Cobalt



Posh
62989
Lichen



Posh
62980
Foxy



Posh
62988
Peridot



Posh
62991
Bordeaux



Posh
62990
True Blue



Posh
62986
Flirt



Posh
62993
Sumatra



Posh
62987
Spice

Specifications and Technical Data

Pattern (Cleaning Code)	Soil and Stain Protective Finish	Content	Abrasion Resistance ▲ (Wyzenbeek)	Flammability*
Acrobat (W-S)	Crypton® Green	50% Post Industrial Recycled Polyester, 33% Post Consumer Recycled Polyester, 17% Polyester	Exceeds 60,000 Double Rubs (Heavy Duty)	California Technical Bulletin 117, Section E UFAC Class 1 NFPA 260
Detail (W-S)	Enhanced Soil & Stain Resistant	99% Polyester, 1% Nylon	Exceeds 200,000 Double Rubs (Heavy Duty)	California Technical Bulletin 117, Section E UFAC Class 1 NFPA 260
Leaps & Bounds (W-S)	Enhanced Soil & Stain Resistant	61% Polyester, 39% Post Consumer Recycled Polyester	Exceeds 65,000 Double Rubs (Heavy Duty)	California Technical Bulletin 117, Section E UFAC Class 1 NFPA 260
Posh (W)	Crypton®	100% Polyester	Exceeds 100,000 Double Rubs (Heavy Duty)	California Technical Bulletin 117, Section E UFAC Class 1 NFPA 260
Swivel (W-S)	Enhanced Soil & Stain Resistant	74% Post Consumer Recycled Polyester, 26% Nylon	Exceeds 100,000 Double Rubs (Heavy Duty)	California Technical Bulletin 117, Section E UFAC Class 1 NFPA 260
Wyatt (W-S)	Inherent Soil & Stain Resistant	Polyurethane Face with Polyester Backing	Exceeds 100,000 Double Rubs (Heavy Duty)	California Technical Bulletin 117, Section E UFAC Class 1 NFPA 260

All fabrics shown are 54" wide.
Dye lots may vary slightly from samples shown.

*This term and any corresponding data refer to typical performance in the tests indicated and should not be construed to imply the behavior of this or any other material under actual fire conditions.
All patterns shown may contribute to compliance with California Technical Bulletin 133 when used in conjunction with other suitable components.

Note: Patterns: Acrobat, Detail, Posh, and Wyatt include Moisture Barrier Protection. Moisture Barrier Protection prevents moisture from penetrating the material and damaging your furniture's underpadding. Moisture Barrier Protection can be added to Leaps & Bounds and Swivel for an upcharge.

Cleaning and Maintenance

Please be sure to include these materials in a regular cleaning and maintenance program. Vacuum regularly to remove dirt and dust. Remove all soil and spills as quickly as possible. Wipe up any spills before they dry using a clean fabric cloth. If stain has dried refer to material cleaning code for further guidance.

Patterns Acrobat, Detail, Leaps & Bounds, Swivel and Wyatt may be cleaned with diluted bleach solutions. For specific instructions please contact CF Stinson.

Exercise proper care in cleaning. This information is not a guarantee and does not relieve the user from the responsibility of the proper and safe use of these fabrics and all cleaning agents.

For additional cleaning information specific to a pattern contact CF Stinson at 800.841.6279 or visit cfstinson.com.



Acrobat



Swivel

FOR SAMPLES FOR SPECIFIC PROJECTS, PLEASE CONTACT CF STINSON AT 800.841.6279 OR VISIT CFSTINSON.COM

Sauder Education*

930 W. Barre Rd.
Archbold, OH 43502-0230

800.537.1530 ph.
419.446.4945 fax
SauderEducation.com

Stinson

C.F. Stinson, Inc.
2849 Product Drive
Rochester Hills, MI 48309

W cfstinson.com
P 800 841 6279
F 248 299 3884