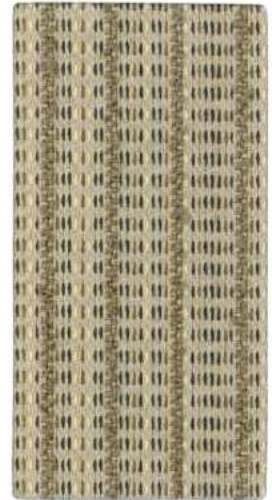


Runner Standard, 007 Bluff



Abacus Std, 010 Replica



Shuttle Std, 016 Clam



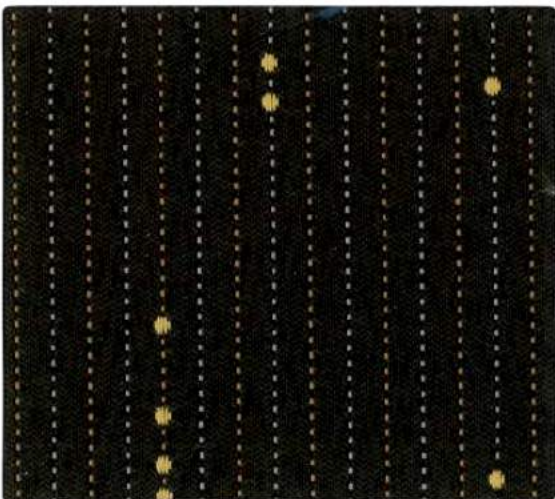
Plait, 003 Mesa



Runner Std, 008 Arid



Exchange, 008 Buck



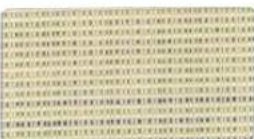
Abacus Standard, 011 Cellar



Exchange, 001 Cinder



Runner Std, 011 Plot



Waxen, 001 Appear



Waxen, 005 Frozen



Waxen, 007 Patina



Waxen, 019 Bayou





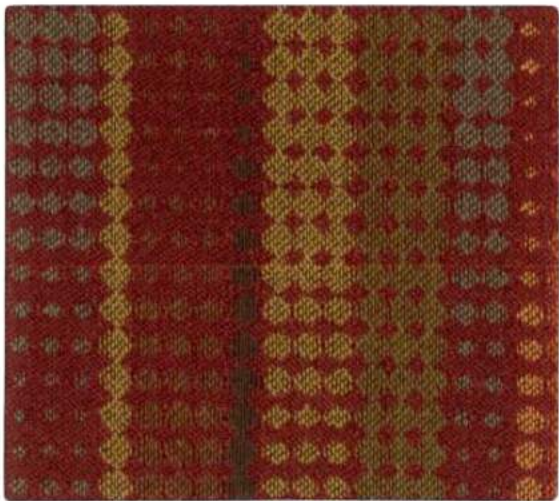
Bevel, 003 Amber



Shuttle Std, 017 Plateau



Exchange, 010 Rhubarb



Runner Standard, 012 Carousel



Bevel, 013 Cinnabar



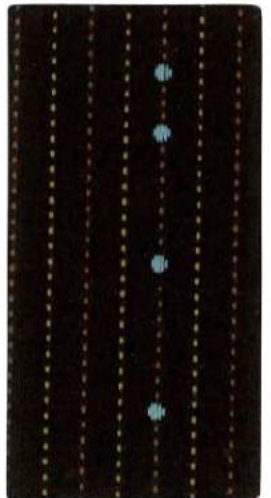
Plait, 007 Sangria



Plait, 005 Sequoia



Exchange, 002 Sable



Abacus Std, 012 Extract



Waxen, 003 Savanna



Waxen, 012 Harvest



Waxen, 010 Ruby



Waxen, 011 Ember





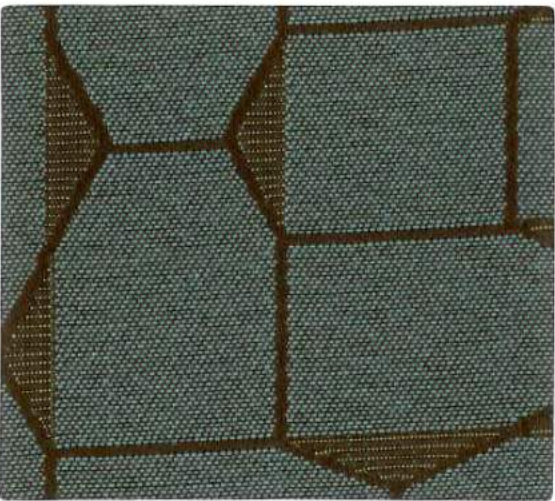
Plait, 002 Sachet



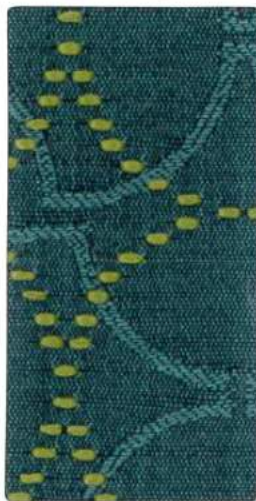
Exchange, 007 Clay



Runner Std, 009 Grove



Bevel, 010 Geyser



Plait, 008 Reef



Exchange, 004 Gull



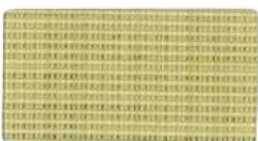
Runner Standard, 010 Starboard



Shuttle Std, 018 Shoal



Plait, 009 Stormy



Waxen, 014 Fresh



Waxen, 006 Highland

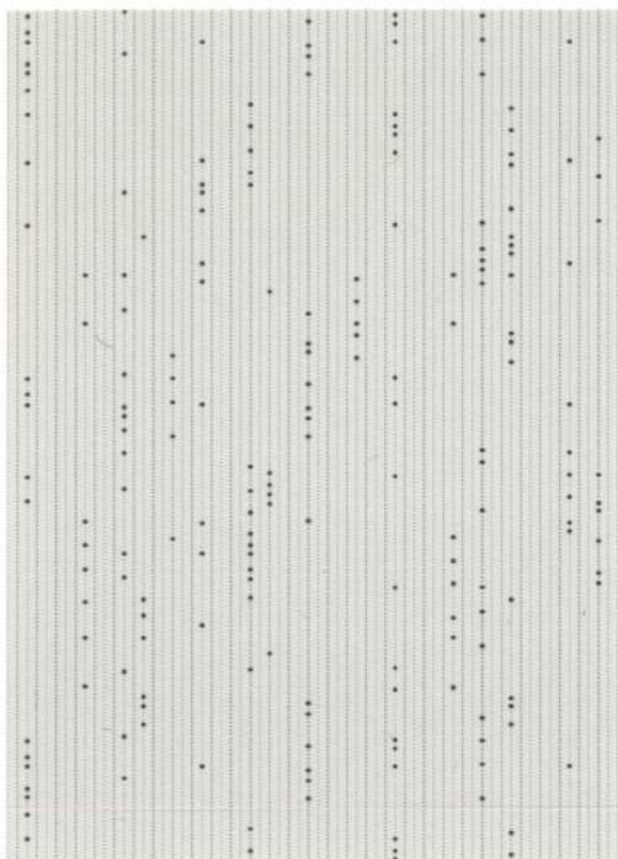


Waxen, 016 Jay

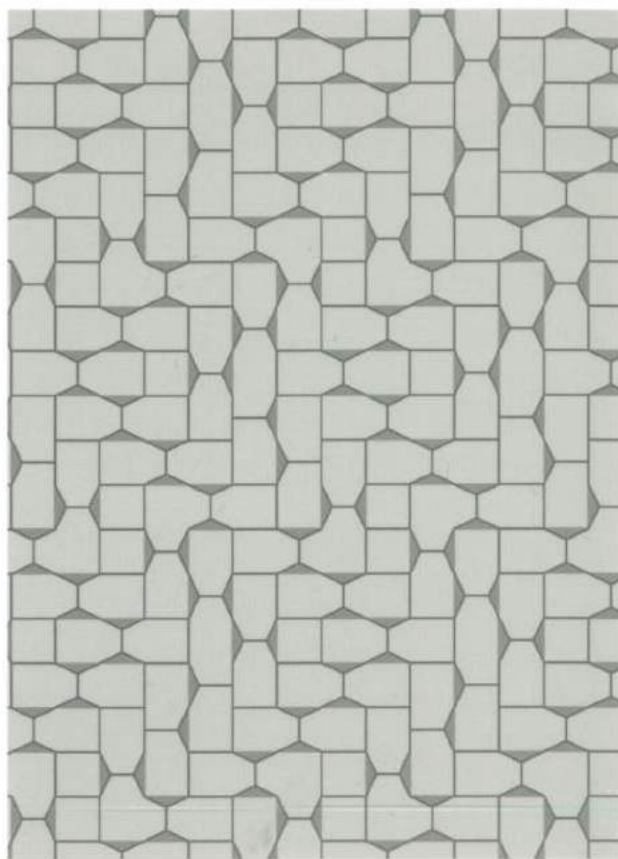


Waxen, 017 Gazer

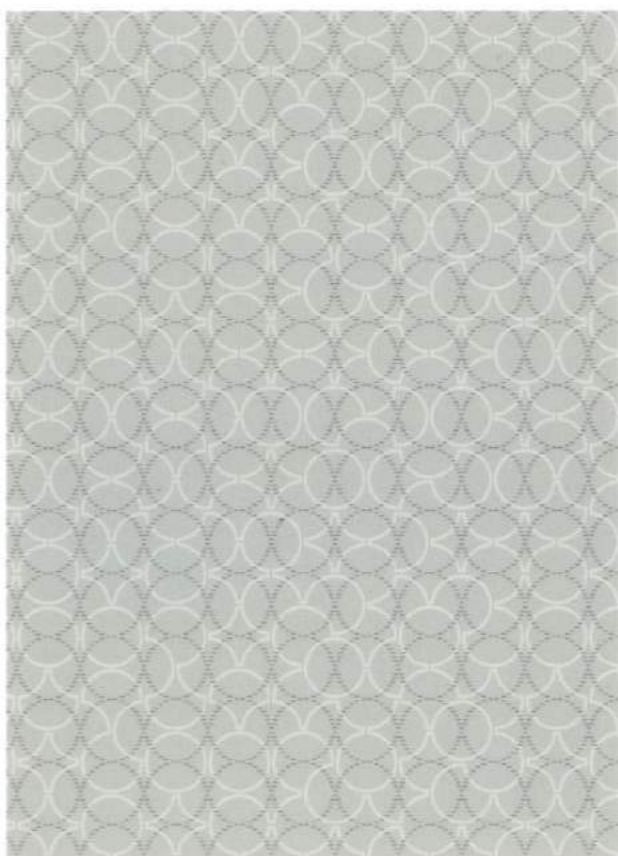




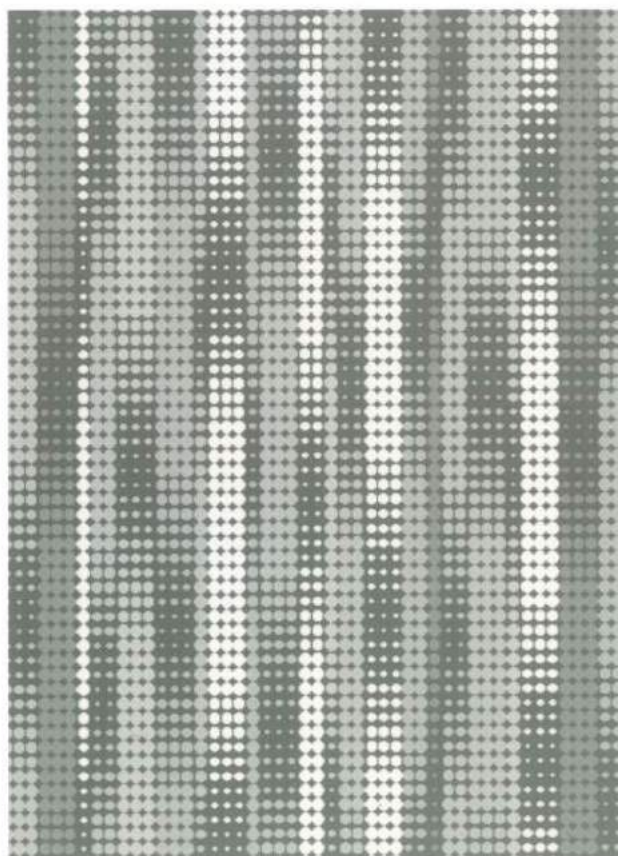
Abacus Standard
















Bevel



Plait



Runner Standard

Pattern	Content	Finish/Backing	Repeat	Abrasion
<b>Abacus Standard 466140*</b>	54% Post-Industrial Recycled Polyester, 46% Post-Consumer Recycled Polyester	PFOA-Free Stain Resistant, Acrylic	29" V, 14 1/4" H	65,000+ 
<b>Bevel 466131</b>	63% Polyester, 24% Post-Consumer Recycled Polyester, 13% Post-Industrial Recycled Polyester	PFOA-Free Stain Resistant, Polyester	13" V, 7 1/4" H	70,000+ 
<b>Exchange 466027</b>	68% Post-Industrial Recycled Polyester, 32% Post-Consumer Recycled Polyester	Stain Resistant	5" V, 7" H	60,000+ 
<b>Plait 466052</b>	53% Post-Industrial Recycled Polyester, 32% Polyester, 15% Post-Consumer Recycled Polyester	Stain Resistant	14 3/4" V, 15" H	100,000+ 
<b>Runner Standard 466167*</b>	57% Post-Industrial Recycled Polyester, 43% Post-Consumer Recycled Polyester	Stain Resistant, Acrylic	14" V, 7 1/2" H	80,000+ 
<b>Shuttle Standard 466168*</b>	84% Post-Industrial Recycled Polyester, 16% Post-Consumer Recycled Polyester	Stain Resistant, Latex	6 1/2" V	50,000+ 
<b>Waxen 466078</b>	100% Polyester	PFOA-Free Stain Resistant, Acrylic		85,000+ 
<b>Width</b>	54" (Abacus Standard, Bevel, Shuttle Standard, Waxen); 57" (Exchange); 58" (Plait, Runner Standard)			
<b>Flammability</b>	These textiles meet all appropriate flammability requirements, including California Bulletin #117 and NFPA 260, and are compatible with California Bulletin #133.			
<b>Maintenance</b>	Consult Maharam at 800.645.3943 or visit maharam.com.			
<b>Quick Ship</b>	Orders of up to 60 yards per Quick Ship color ship the next business day. 			
<b>Samples</b>	To order samples, call 800.645.3943 or visit maharam.com.			
<b>Note</b>	*Shown railroaded			
<b>Reduced Environmental Impact</b>	Environmentally Improved Manufacturing Process: Heavy metal free dyes with high exhaustion rates (Abacus Standard, Exchange, Plait, Runner Standard, Waxen), Heavy metal free dyes (Bevel), PFOA free (Bevel, Waxen). Recycled Content (Abacus Standard, Bevel, Exchange, Plait, Runner Standard, Shuttle Standard). Reduced Emissions: Greenguard and Greenguard for Children & Schools certified for indoor air quality (all patterns).			
	© 2012 Maharam			
	    			

10/12

Sauder Education

930 W. Barre Rd.  
Archbold, OH 43502.0230  
800.537.1530  
419.446.4945 Fax  
SauderEducation.com



800.645.3943

maharam.com

ED026710\*2