

Sauder Education®

Fast Forward 4

MOMENTUM
TEXTILES



Fuse Pimento



Saffron



Malted



Pristine



Ginger



Carmine



Lunar



Morel



Cress



Azurean



Iris



Walnut



Pepper



Knack Wave



Teak



Sax



Brisk



Zest



Fresco



Reed

Knack has limitations on Sauder Education products.



Origin Poppy



Eureka



Gaia



Caraway



Mikan



Sodalite



Steel



Euro



Indigo



Sapphire



Garnet



Twine



Jet



Perk Cabana



Sesame



Dijon



Pewter



Cabana



Cedar



Flint



Auburn



Crimson



Patriot



Regal



Walnut



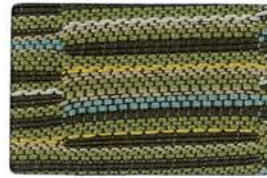
Ebony



Lineup Tranquil



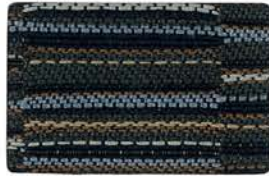
Sandstone



Fern



Spice



Baltic



Pewter



Shadow



Solace Azul



Almond



Gilded



Blaze



Earth



Carmine



Mineral



Pear



Celadon



Indigo



Peony



Cinder



Ebony

Fast Forward 4

Width- Pattern	Fiber Content & Backing	Finish	Abrasion (D.R.)	Light-fastness	Approx. Repeats	Cleaning Code
54" AXIS ▲ ▲ ▲ ▲ *	65% Post Industrial Recycled Polyester, 35% Post Consumer Recycled Polyester Acrylic Backing	Soil & Stain Resistant	90,000	(Cl. 4.5) 60 Hrs.	1 1/4" L, 1 1/4" W	WS
54" FUSE ▲ ▲ ▲ ▲ *	65% Post Industrial Recycled Polyester, 35% Post Consumer Recycled Polyester Latex Backing	Soil & Stain Resistant	100,000	(Cl. 4.5) 40 Hrs.		WS
54" JARGON ▲ ▲ ▲ ▲ *	100% Polyester Acrylic Backing	Soil & Stain Resistant	90,000	(Cl. 4) 40 Hrs.	1/2" L, 1/2" W	WS
54" KNACK ▲ ▲ ▲ ▲ *	100% Polyester Acrylic Backing	Soil & Stain Resistant	100,000	(Cl. 5) 40 Hrs.	1 5/8" L, 1 3/4" W	WS
56" LINEUP ▲ ▲ ▲ ▲ *	100% Post Consumer Recycled Polyester Acrylic Backing	Soil & Stain Resistant	100,000	(Cl. 5) 40 Hrs.	1 3/4" L, 3 3/4" W	WS
58" ORIGIN ▲ ▲ ▲ ▲ *	100% Polyester Acrylic Backing	Soil & Stain Resistant	282,000	(Cl. 4) 40 Hrs.		WS
54" PERK ▲ ▲ ▲ ▲ *	100% Polyester Acrylic Backing	Soil & Stain Resistant	102,000	(Cl. 5) 40 Hrs.	1/4" L, 1/4" W	WS
55" SOLACE ▲ ▲ ▲ ▲ *	49% Polyester, 41% Post Industrial Recycled Polyester, 10% Post Consumer Recycled Polyester Acrylic Backing	Soil & Stain Resistant	100,000	(Cl. 4) 40 Hrs.		WS

All Patterns meet CA Bulletin 117-2013.

Primary Application: Upholstery Seating.

*ACT® Registered Certification Marks

EXPLANATION OF ACT ICONS FOR UPHOLSTERY

FIRE RETARDANCY

Flammability testing determined as fabric's resistance to burning.



PASSES

California 117-2013

COLORFASTNESS TO WET & DRY CROCKING

Colorfastness to wet & dry crocking refers to the rubbing off of color from the fabric onto clothing, hands or other materials and can occur under wet or dry conditions.



PASSES

AATCC 8-1974 Dry Crocking, Class 4 minimum;
Wet Crocking,
Class 3 minimum

COLORFASTNESS TO LIGHT

Colorfastness to light is the degree to which fabric will retain its color when exposed to light.



PASSES

AATCC 16A-1974 or AATCC 16E-1976; Class 4 minimum
at 40 hours
NOTE: Class 4 minimum at 60 hours is recommended for direct
sunlight exposure situations

PHYSICAL PROPERTIES

3 physical property tests include: brush pill test to determine a fabric's pilling. Breaking/tensile strength is the ability of a fabric to withstand tension without breaking or tearing. Seam slippage is the pulling apart of fabrics at the seams.



PASSES

Brush Pill ASTM D3511, 3-4 minimum
Breaking Strength ASTM D3597-D1682-64 (1975)
50 lbs. minimum in warp & weft
Seam Slippage ASTM D3597-D434-75 25 lbs. minimum in
warp & weft



GREENGUARD Children & Schools Indoor Air Quality Certified®. CA Section 01350 compliant.
Eligible for CHPS Low-Emitting Material Credits.

SAUDER | Education

930 W. Barre Road

Archbold, OH 43502

800.537.1530 ph

419.446.4945 fax

sales@saudereducation.com

www.saudereducation.com

ABRASION

Abrasion is the ability of a fabric to withstand damage from wear and rubbing. There is a general contract specification as well as a heavy duty specification.



General Contract

PASSES

ASTM 3597 modified (#10 cotton duck);
15,000 double rubs Wyzenbeek Method



Heavy Duty

ASTM 3597 modified (#10 cotton duck);
30,000 double rubs Wyzenbeek Method or
ASTM D4966 (with 21 oz. weight);
40,000 rubs Martindale Method

CLEANING CODE DEFINITIONS

WS: Clean with water-based cleaning agents or foam. (Energine, Carbonz, Renuzit or other similar products). Vacuuming or light brushing is recommended to prevent dust and soil buildup.

5CLICKS

In 5 simple clicks, you can find hundreds of pre-approved, in grade, and in stock fabrics.

Additional patterns and colors are available in Momentum Textiles Library Books or visit us at memosamples.com

Memo samples are available on request: call, fax, or visit our Web site.

MOMENTUM TEXTILES

800-366-6839
memosamples.com