

Sauder Education®

Intuition

MOMENTUM
TEXTILES



Cover Cloth Sorrel



Platinum



Cyan



Zest



Fuchsia



Vesper



Bouquet



Taupe



Indigo



Flame



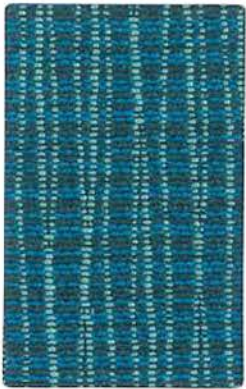
Electric



Hickory



Graphite



Graph Tidal



Alpine



Cork



Poppy



Chalice



Parrot



Alloy



Wave



Lapis



Ruby



Bark



Coal



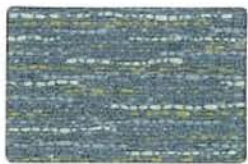
Anchor



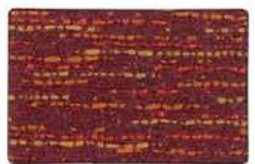
Fuse Lunar



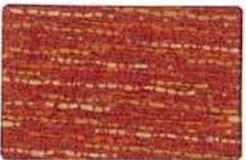
Saffron



Pristine



Carmine



Pimento



Azurean



Pepper



Intermix II Coast



Salsa



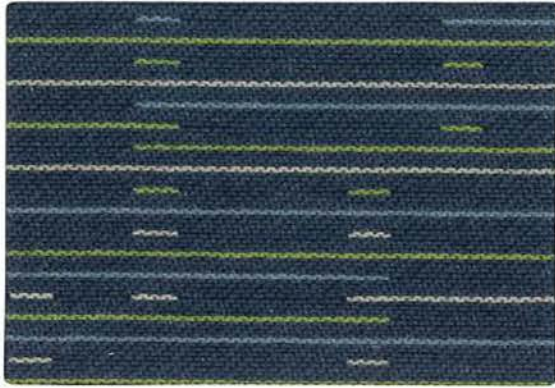
Cosmic



Midnight



Pewter



Jot Baltic



Fossil



Shadow



Scarlet



Onyx



Faux Felt Sprout



Stone



Pumice



Camel



Berry



Graphite



Charcoal



Pool



Lagoon



Path



Bark



Vibrant



Quail

Faux Felt has limitations on Sauder Education Products.



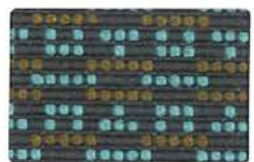
Bobby Moss



Lemon



Fuchsia



Aqua



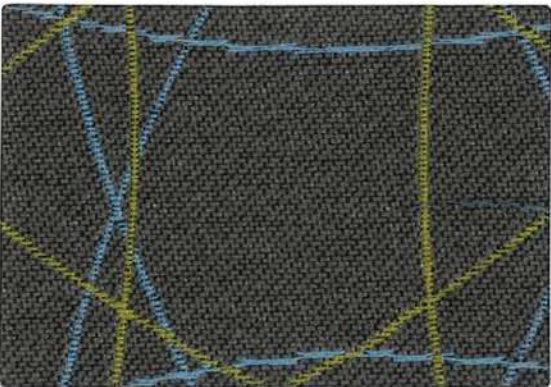
Glow



Iris



Anchor



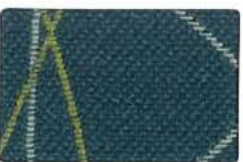
Free Evening



Platinum



Graphite



Oasis



Orbit



Lens Graphite



Silver



Crimson



Navy



Night



Expo Lemon



Latte



Oasis



Sprout



Sky



Raspberry



Fog



Zest



Leaf



Spirit



Festive



Viola



Tuxedo



Dart Ash



Ink



Carmine



Geode



Cadet



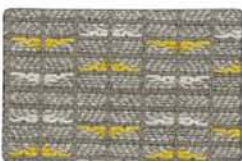
Slate



Ebony



Slice Admiral



Miller



Pumice



Henna



Charcoal

Intuition

Width - Pattern	Fiber Content & Backing	Finish	Abrasion (D.R.)	Light-fastness	Approx. Repeats	Cleaning Code
54" BOBBY # 4 5 6 7 *	68% Repreve® Post Consumer Recycled Polyester, 32% Polyester Acrylic Backing		150,000	(Cl. 3.5) 40 Hrs.	7/8" L, 1/2" W	WS
59" COVER CLOTH # 4 5 6 7 *	56% Repreve® Post Consumer Recycled Polyester, 44% Polyester	Crypton® Green	200,000	(Cl. 4) 40 Hrs.		W BC (10:1)
56" DART # 4 5 6 7 *	89% Repreve® Post Consumer Recycled Polyester, 11% Polyester Acrylic Backing		102,000	(Cl. 5) 40 Hrs.	9 5/8" L, 4 7/8" W	W
54" EXPO # 4 5 6 7 *	65% Post Industrial Recycled Polyester, 35% Post Consumer Recycled Polyester Acrylic Backing	Soil & Stain Resistant	102,000	(Cl. 4) 60 Hrs.	1/8" L, 1/8" W	WS
56" FAUX FELT # 4 5 6 7 *	62% Repreve® Post Consumer Recycled Polyester, 38% Polyester Acrylic Backing	Crypton® Green	75,000	(Cl. 4.5) 40 Hrs.		WS BC (10:1)
57" FREE # 4 5 6 7 *	100% Post Consumer Recycled Polyester Acrylic Backing	Soil & Stain Resistant	100,000	(Cl. 4) 40 Hrs.	5 3/8" L, 5" W	WS
54" FUSE # 4 5 6 7 *	65% Post Industrial Recycled Polyester, 35% Post Consumer Recycled Polyester Latex Backing	Soil & Stain Resistant	100,000	(Cl. 4.5) 40 Hrs.		WS
56" GRAPH # 4 5 6 7 *	75% Repreve® Post Consumer Recycled Polyester, 25% Polyester Acrylic Backing		170,000	(Cl. 5) 40 Hrs.	3 3/8" L, 7 1/2" W	W
54" INTERMIX II # 4 5 6 7 *	100% Post Consumer Recycled Polyester Acrylic Backing	Soil & Stain Resistant	90,000	(Cl. 4) 40 Hrs.	1 5/8" L, 5/8" W	WS
56" JOT # 4 5 6 7 *	100% Repreve® Post Consumer Recycled Polyester Acrylic Backing		100,000	(Cl. 4.5) 40 Hrs.	10" L, 5" W	W
56" LENS # 4 5 6 7 *	81% Repreve® Post Consumer Recycled Polyester, 19% Recycled Polyester Acrylic Backing		110,000	(Cl. 4.5) 40 Hrs.	10" L, 7 1/2" W	W
54" SLICE # 4 5 6 7 *	84% Repreve® Post Consumer Recycled Polyester, 16% Polyester Acrylic Backing		80,000	(Cl. 5) 40 Hrs.	7/8" L, 3/4" W	WS

All Patterns meet CA Bulletin 117-2013.

Primary Application: Upholstery Seating.

*ACT® Registered Certification Marks

EXPLANATION OF ACT ICONS FOR UPHOLSTERY

FIRE RETARDANCY

Flammability testing determined as fabric's resistance to burning.



PASSES
California 117-2013

COLORFASTNESS TO WET & DRY CROCKING

Colorfastness to wet & dry crocking refers to the rubbing off of color from the fabric onto clothing, hands or other materials and can occur under wet or dry conditions.



PASSES
AATCC 8-1974 Dry Crocking, Class 4 minimum;
Wet Crocking,
Class 3 minimum

COLORFASTNESS TO LIGHT

Colorfastness to light is the degree to which fabric will retain its color when exposed to light.



PASSES
AATCC 16A-1974 or AATCC 16E-1976; Class 4 minimum
at 40 hours
NOTE: Class 4 minimum at 60 hours is recommended for direct
sunlight exposure situations



GREENGUARD Gold Certified, CA Section 01350 compliant.
Eligible for CHPS Low-Emitting Material Credits.

Sauder Education

930 W. Barre Road

Archbold, OH 43502

800.537.1530 ph

419.446.4945 fax

sales@saudereducation.com

www.saudereducation.com

PHYSICAL PROPERTIES

3 physical property tests include: brush pill test to determine a fabric's pilling. Breaking/tensile strength is the ability of a fabric to withstand tension without breaking or tearing. Seam slippage is the pulling apart of fabrics at the seams.



PASSES
Brush Pill ASTM D3511, 3-4 minimum
Breaking Strength ASTM D3597-D1682-64 (1975)
50 lbs. minimum in warp & weft
Seam Slippage ASTM D3597-D434-75 25 lbs. minimum in
warp & weft

ABRASION

Abrasion is the ability of a fabric to withstand damage from wear and rubbing. There is a general contract specification as well as a heavy duty specification.



PASSES
General Contract ASTM 3597 modified (#10 cotton duck);
15,000 double rubs Wyzenbeek Method



Heavy Duty ASTM 3597 modified (#10 cotton duck);
30,000 double rubs Wyzenbeek Method or
ASTM D4966 (with 21 oz. weight);
40,000 rubs Martindale Method

CLEANING CODE DEFINITIONS

WS: Water-based cleaning agents or foam.

W: Water-based foam or cleaner.

BC: Bleach Cleanable

5 CLICKS

In 5 simple clicks, you can find hundreds
of pre-approved, in grade, and in stock fabrics.

Additional patterns and colors are available in Momentum Textiles
Library Books or visit us at memosamples.com

Memo samples are available on request: call, fax, or visit our Web site.

MOMENTUM
TEXTILES

800-366-6839
memosamples.com